



Technical Service Bulletin

Reference: ICOM-TSB17-001	Date: 1/25/2017
-------------------------------------	---------------------------

2016 & 2017 Ford F150 5.0L (Flexfuel) Bi-Fuel Injection Nozzle Location

UNITS AFFECTED:

New installations of the ICOM JTG II Bi-Fuel System on all 2016 & 2017 Ford F150 Flexfuel 5.0L engines.

SERVICE INFORMATION:

This bulletin provides information on where to locate the fuel rail injection nozzles on the intake manifold.

PURPOSE:

To eliminate a stalling / hesitation on acceleration due to a air restriction plate that closes when the vehicle is idling potentially restricting flow of LPG into the cylinder.

ACTION:

See Attachment 'A' for details.

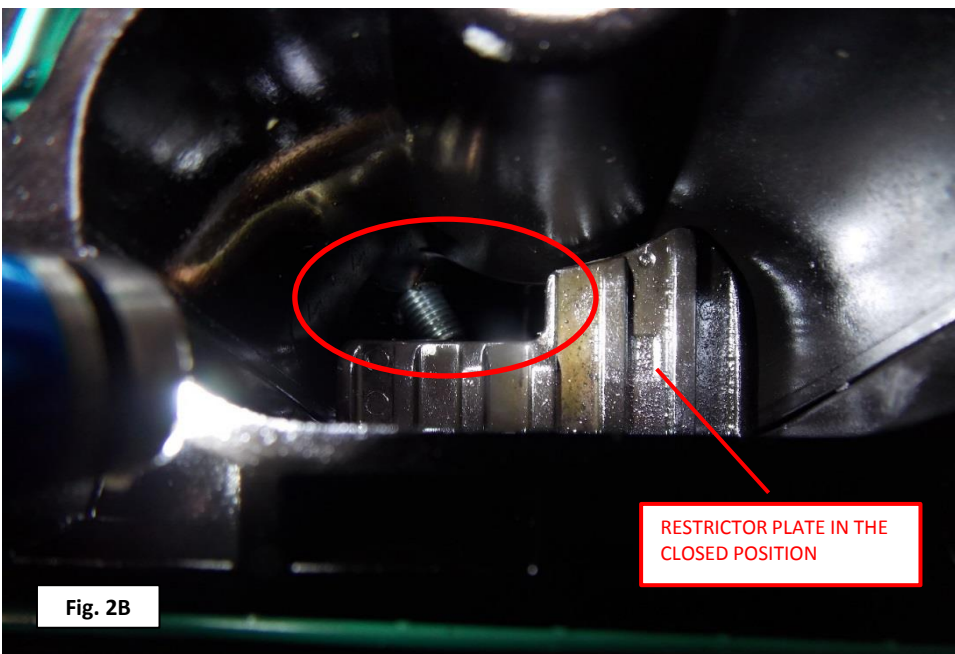
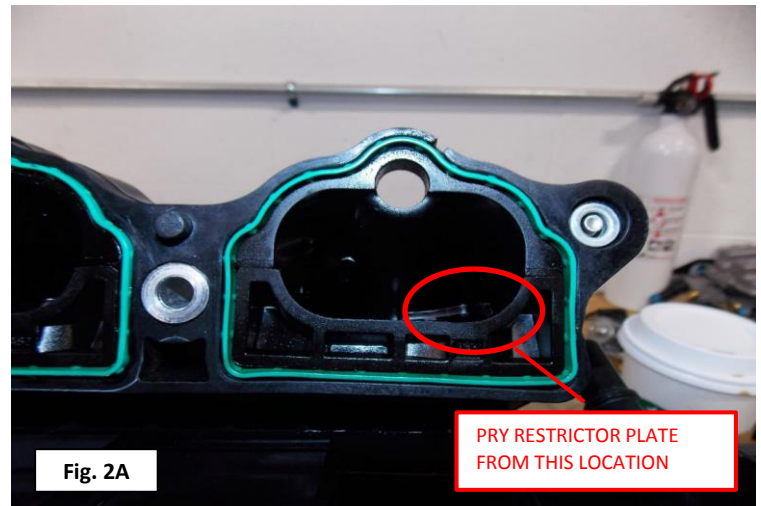
1. The intake manifold must be removed to properly locate and install the injection nozzle.

(Fig. 1)

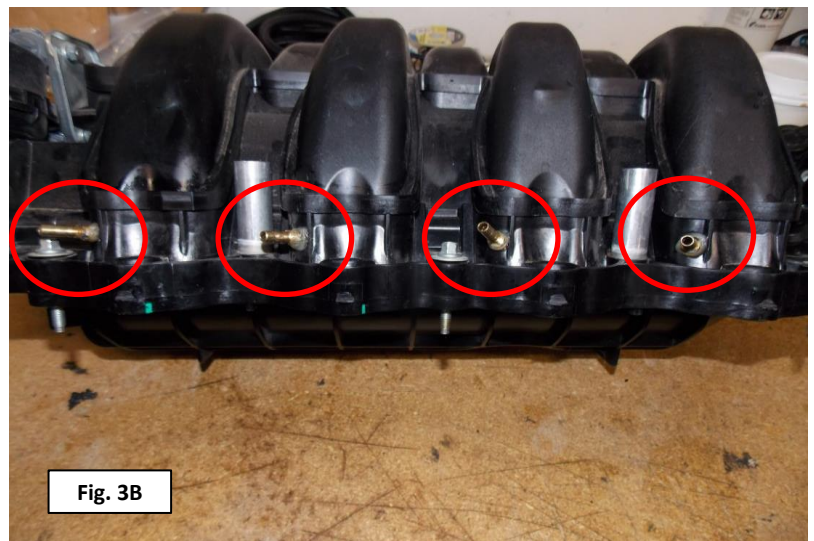
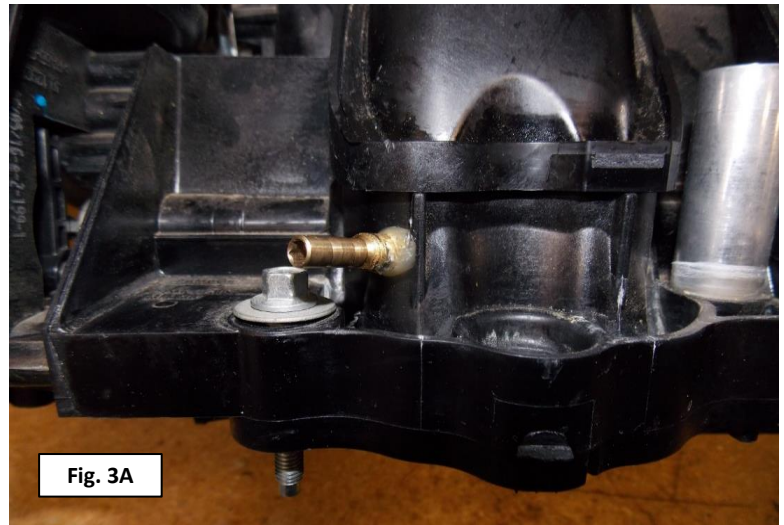


2. Locate the restrictor plate in the open position along the inside edge of one of the intake manifold openings. Using a small flat blade screw driver, carefully pry the door up and into the fully closed position as shown in Fig. 2A and Fig. 2B.

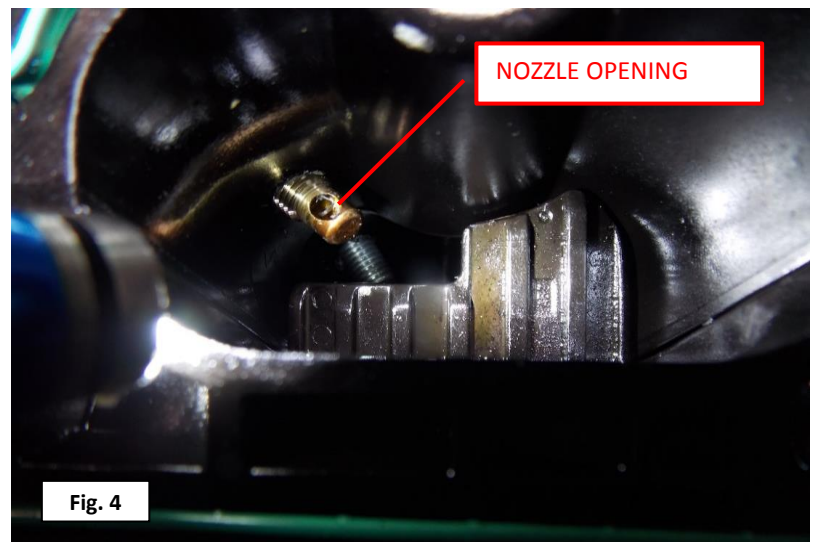
3. The injector nozzle needs to be positioned inside the opening shown in Fig. 2B with the red circle.



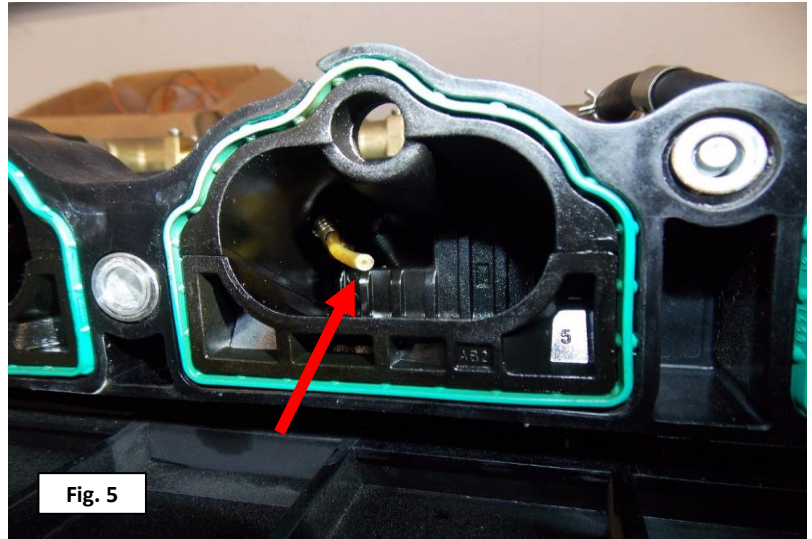
4. Install the nozzle into the location on the manifold shown in Fig. 3A and Fig. 3B.



5. Position the opening in the nozzle as shown in Fig. 4. Cycle the restrictor plate up and down to verify the nozzle does not come into any contact with the plate during operation.



6. Fully insert the rislan tube into the nozzle as shown in Fig. 5. Cycle the restrictor plate up and down to verify the tube does not come into any contact with the plate during operation.



7. Cut the rislan tube flush to the bottom of the intake manifold.
(Fig. 6)

