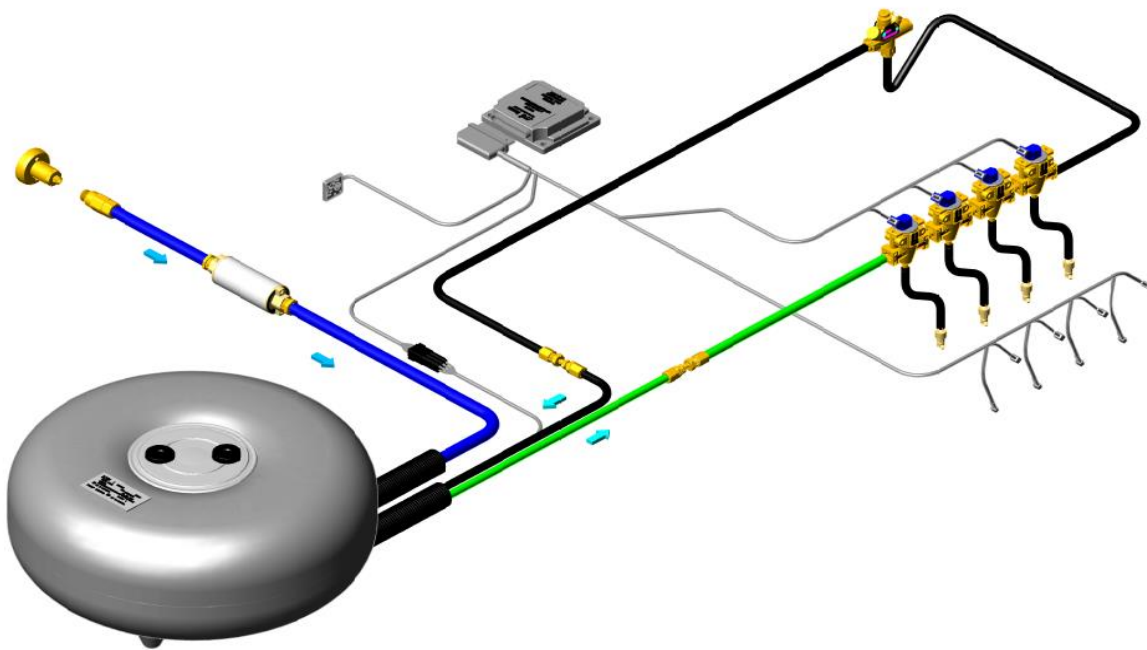




ICOM FUEL FILL HOUSING ASSEMBLY INSTRUCTIONS



P11X-9211-AA
Revision: A - Dated 7/3/12
Replaces: None



INSPECTION

TORQUE

CRITICAL PROCESS



ITEM NUMBER



OPERATION

10

A



B



C



D



E



F



G



H



J



K



10) THE FOLLOWING IS A LIST OF THE COMPONENTS CONTAINED WITHIN THE FUEL FILL HOUSING ASSY W/FILL VALVE KIT (P11X4-9308-AA)

- A HOUSING - FUEL FILL VALVE
- B VALVE - FUEL FILL
- C PLATE - FUEL FILL VALVE MOUNTING
- D PLATE - FUEL FILL VALVE SPACER
- E SCREW - M4.8 x 12
- F PLATE - FUEL FILL VALVE HOUSING MOUNTING
- G GASKET - MOUNTING PLATE
- H O-RING - FUEL FILL VALVE HOUSING CAP
- J SCREW - M3.9 x 13
- K CAP - FUEL FILL VALVE HOUSING

ITEM	PART NUMBER	QTY	DESCRIPTION	TORQUE	TOOLS
A		1	HOUSING - FUEL FILL VALVE		82mm (3 1/4") HOLE SAW
B		1	VALVE - FUEL FILL		PHILLIPS SCREW DRIVER
C		1	PLATE - FUEL FILL VALVE MOUNTING		
D		1	PLATE - FUEL FILL VALVE SPACER		
E		4	SCREW - M4.8 x 12		
F		1	PLATE - FUEL FILL VALVE HOUSING MOUNTING	PROCESS NAME	REV
G		1	GASKET - MOUNTING PLATE		
H		1	O-RING - FUEL FILL VALVE HOUSING CAP	ICOM FUEL FILL HOUSING ASSEMBLY	A
J		3	SCREW - M3.9 x 13	PROCESS NUMBER	PAGE
K		1	CAP - FUEL FILL VALVE HOUSING	P11X-9211-AA	1 OF 4



INSPECTION

TORQUE

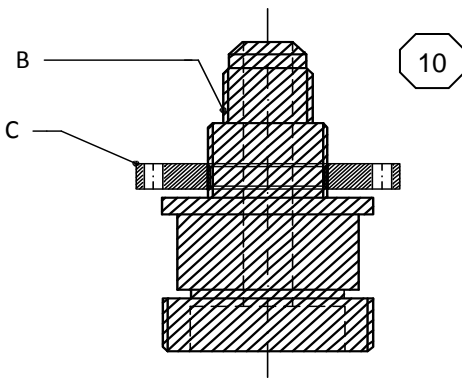
CRITICAL PROCESS



ITEM NUMBER



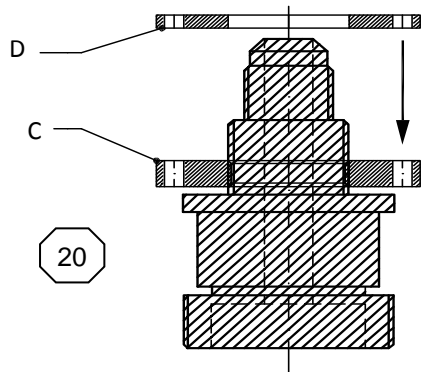
OPERATION



10) OBTAIN THE FUEL FILL VALVE (B) AND THE BLACK FUEL FILL VALVE MOUNTING PLATE (C)

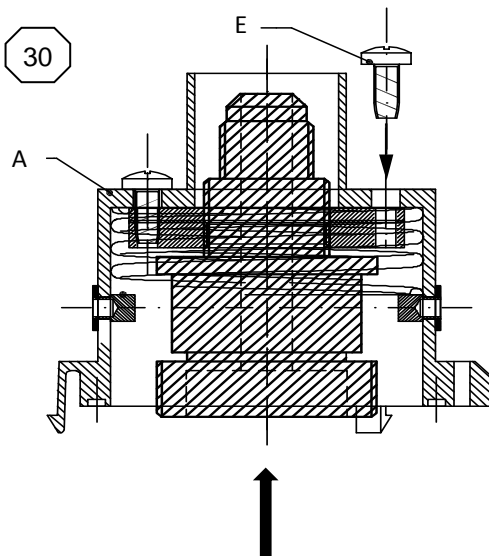
REMOVE AND DISCARD THE YELLOW PROTECTIVE CAP, NUT AND WASHER FROM THE FILL VALVE

INSTALL AND HAND TIGHTEN MOUNTING PLATE (C) ONTO FUEL FILL VALVE (B) AS SHOWN



20) OBTAIN THE FUEL FILL VALVE SPACER PLATE (D)

INSTALL SPACER PLATE (D) ONTO FILL VALVE (B); SEAT SPACER PLATE (D) ONTO MOUNTING PLATE (C)



30) OBTAIN THE FUEL FILL VALVE HOUSING (A) AND THE (4) SCREWS - M4.8 x 12 (E)

INSERT THE ASSEMBLED FILL VALVE (B) INTO FILL VALVE HOUSING (A) AS SHOWN

ALIGN THE (4) HOLES IN THE MOUNTING AND SPACER PLATES TO THE (4) HOLES ON THE INSIDE OF THE HOUSING

FROM OUTSIDE THE HOUSING, INSTALL AND FULLY TIGHTEN THE (4) SCREWS INTO THE HOUSING AND MOUNTING PLATES AS SHOWN

ITEM	PART NUMBER	QTY	DESCRIPTION	TORQUE	TOOLS
A		1	HOUSING - FUEL FILL VALVE		PHILLIPS SCREW DRIVER
B		1	VALVE - FUEL FILL		
C		1	PLATE - FUEL FILL VALVE MOUNTING		
D		1	PLATE - FUEL FILL VALVE SPACER		
E		4	SCREW - M4.8 x 12		
F		1	PLATE - FUEL FILL VALVE HOUSING MOUNTING	PROCESS NAME ICOM FUEL FILL HOUSING ASSEMBLY	
G		1	GASKET - MOUNTING PLATE		
H		1	O-RING - FUEL FILL VALVE HOUSING CAP	REV A	
J		3	SCREW - M3.9 x 13	PROCESS NUMBER P11X-9211-AA	
K		1	CAP - FUEL FILL VALVE HOUSING	PAGE 2 OF 4	



INSPECTION

TORQUE

CRITICAL PROCESS

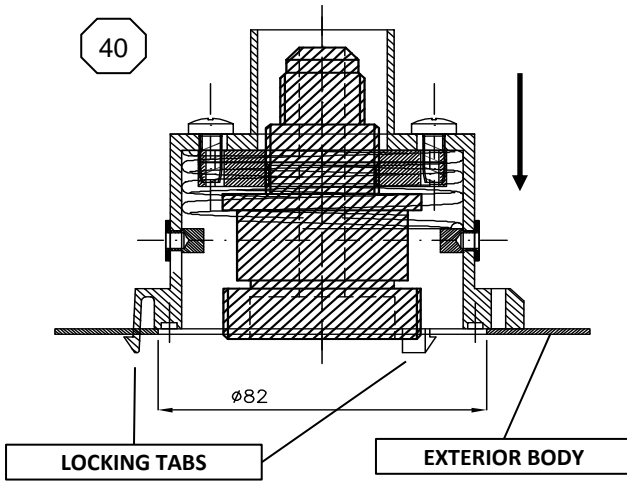


ITEM NUMBER



OPERATION

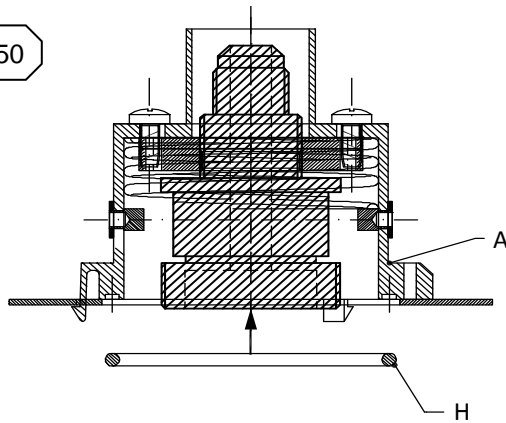
40



40) USING A 82mm (3-1/4") HOLE SAW, DRILL A HOLE INTO THE DESIRED LOCATION ON THE VEHICLE BODY

FROM INBOARD SIDE OF VEHICLE, POSITION THE FILL VALVE HOUSING ASSY TO THE DRILLED OPENING; INSERT THE (3) LOCKING TABS ON THE HOUSING ASSEMBLY INTO THE OPENING; SEAT THE (3) LOCKING TABS TO THE EXTERIOR PORTION OF THE VEHICLE BODY AS SHOWN

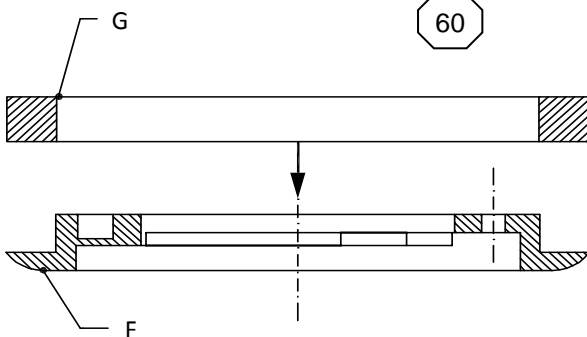
50



50) OBTAIN THE O-RING FOR THE FILL VALVE HOUSING CAP (H)

ALIGN AND SEAT THE O-RING INTO THE O-RING SEAT ON THE FILL VALVE HOUSING (A)

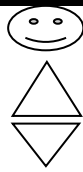
60



60) OBTAIN THE FILL VALVE HOUSING MOUNTING PLATE (F) AND THE MOUNTING PLATE GASKET (G)

ALIGN AND SEAT THE GASKET ONTO THE BACKSIDE OF THE MOUNTING PLATE

ITEM	PART NUMBER	QTY	DESCRIPTION	TORQUE	TOOLS
A		1	HOUSING - FUEL FILL VALVE		82mm (3 1/4") HOLE SAW
B		1	VALVE - FUEL FILL		
C		1	PLATE - FUEL FILL VALVE MOUNTING		
D		1	PLATE - FUEL FILL VALVE SPACER		
E		4	SCREW - M4.8 x 12		
F		1	PLATE - FUEL FILL VALVE HOUSING MOUNTING	PROCESS NAME ICOM FUEL FILL HOUSING ASSEMBLY	
G		1	GASKET - MOUNTING PLATE		
H		1	O-RING - FUEL FILL VALVE HOUSING CAP	PROCESS NUMBER P11X-9211-AA	
J		3	SCREW - M3.9 x 13		
K		1	CAP - FUEL FILL VALVE HOUSING	REV A	
				PAGE 3 OF 4	



INSPECTION

TORQUE

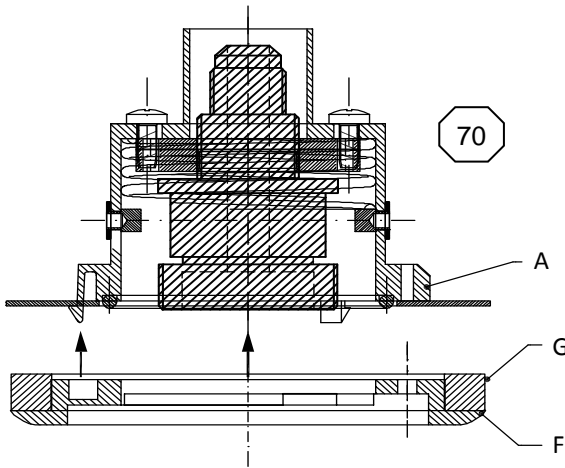
CRITICAL PROCESS



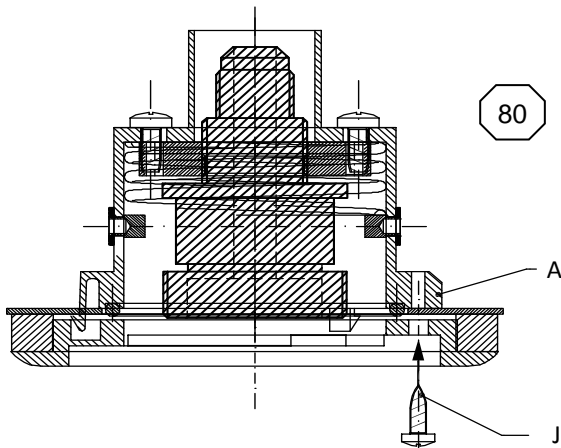
ITEM NUMBER



OPERATION

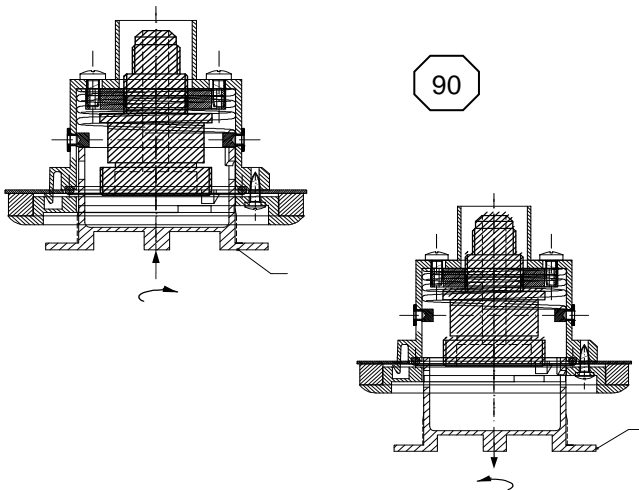


70) ALIGN THE (3) SCREW HOLES IN THE FILL HOUSING MOUNTING PLATE (F) TO THE SCREW HOLES IN THE HOUSING (A); SEAT THE MOUNTING PLATE TO THE HOUSING



80) OBTAIN THE (3) SCREWS - M3.9 x 13 (J)

INSERT THE (3) SCREWS INTO THE FILL HOUSING MOUNTING PLATE HOLES AND FULLY TIGHTEN THE SCREWS INTO THE FILL VALVE HOUSING (A)



90) OBTAIN THE FILL VALVE HOUSING CAP (K)

TO INSTALL THE CAP, INSERT CAP INTO HOUSING; PUSH CAP AGAINST THE SPRING INSIDE HOUSING AND ROTATE CAP '**CLOCKWISE**' TO LOCK THE CAP ONTO THE METAL LOCKING TABS INSIDE THE HOUSING

TO REMOVE THE CAP, DEPRESS CAP INTO HOUSING AND ROTATE THE CAP '**COUNTER CLOCKWISE**' TO UNLOCK THE CAP FROM THE METAL LOCKING TABS INSIDE THE HOUSING

ITEM	PART NUMBER	QTY	DESCRIPTION	TORQUE	TOOLS
A		1	HOUSING - FUEL FILL VALVE		PHILLIPS SCREW DRIVER
B		1	VALVE - FUEL FILL		
C		1	PLATE - FUEL FILL VALVE MOUNTING		
D		1	PLATE - FUEL FILL VALVE SPACER		
E		4	SCREW - M4.8 x 12		
F		1	PLATE - FUEL FILL VALVE MOUNTING		
G		1	GASKET - MOUNTING PLATE		
H		1	O-RING - FUEL FILL VALVE HOUSING CAP		
J		3	SCREW - M3.9 x 13		
K		1	CAP - FUEL FILL VALVE HOUSING		
				PROCESS NAME	REV
				ICOM FUEL FILL HOUSING ASSEMBLY	A
				PROCESS NUMBER	PAGE
				P11X-9211-AA	4 OF 4