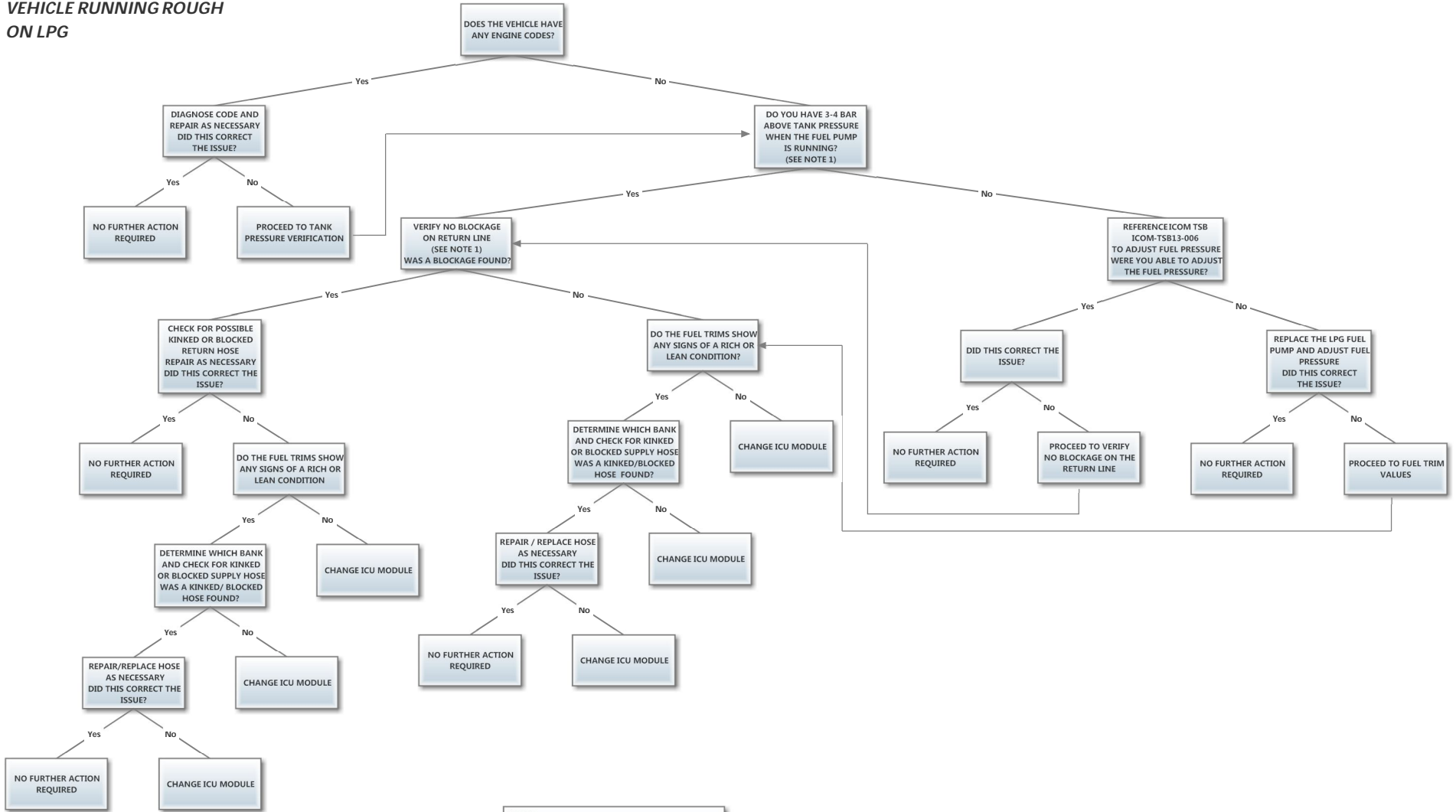


**SYMPTOM:
VEHICLE RUNNING ROUGH
ON LPG**



NOTE 1
 - INSTALL PRESSURE GAUGE ONTO REGULATOR
 - CYCLE THE IGNITION KEY TO 'ON' FOR A FEW SECONDS AND BACK TO 'OFF'
 - IF THE PRESSURE READING ON THE GAUGE DROPS TO TANK PRESSURE INSTANTLY, THERE IS NO BLOCKAGE ON THE RETURN LINE
 - IF THE PRESSURE READING ON THE GAUGE DOES NOT DROP TO TANK PRESSURE INSTANTLY, THERE IS A BLOCKAGE ON THE RETURN LINE