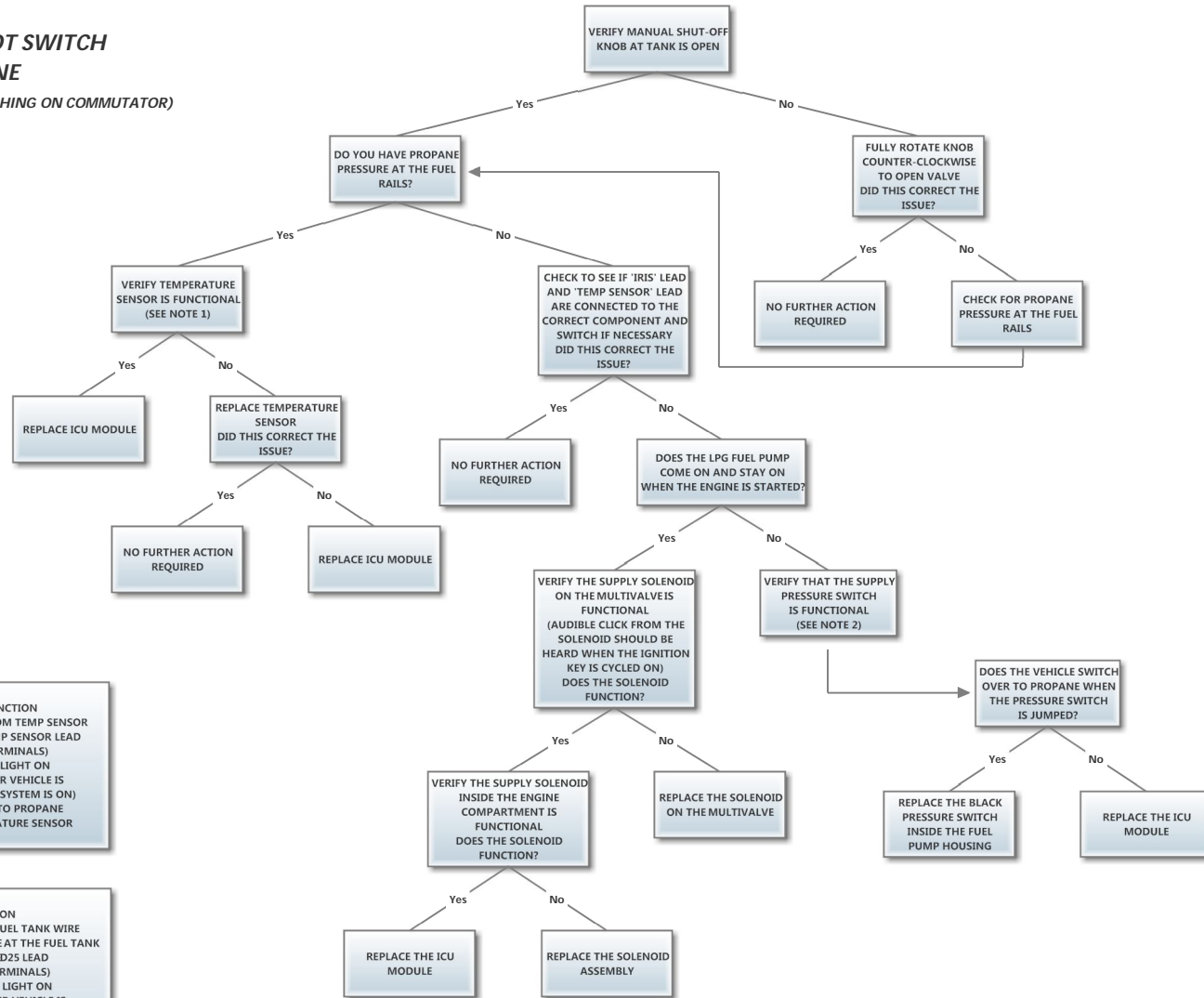


**SYMPTOM:**  
**VEHICLE WILL NOT SWITCH**  
**OVER TO PROPANE**  
 (ORANGE LIGHT NOT FLASHING ON COMMUTATOR)



**NOTE 1**  
 VERIFY TEMPERATURE SENSOR FUNCTION  
 - UNPLUG TEMP SENSOR LEAD FROM TEMP SENSOR  
 - INSTALL JUMPER WIRE INTO TEMP SENSOR LEAD CONNECTOR (BETWEEN THE 2 TERMINALS)  
 - START VEHICLE (VERIFY ORANGE LIGHT ON COMMUTATOR IS FLASHING AFTER VEHICLE IS STARTED TO INDICATE PROPANE SYSTEM IS ON)  
 - IF THE VEHICLE SWITCHES OVER TO PROPANE AFTER 45 SECONDS THE TEMPERATURE SENSOR IS DEFECTIVE - REPLACE

**NOTE 2**  
 VERIFY PRESSURE SENSOR FUNCTION  
 - UNPLUG THE D25 LEAD ON THE FUEL TANK WIRE HARNESS FROM THE MULTIVALVE AT THE FUEL TANK  
 - INSTALL JUMPER WIRE INTO THE D25 LEAD CONNECTOR (BETWEEN THE 2 TERMINALS)  
 - START VEHICLE (VERIFY ORANGE LIGHT ON COMMUTATOR IS FLASHING AFTER VEHICLE IS STARTED TO INDICATE PROPANE SYSTEM IS ON)  
 - IF THE VEHICLE SWITCHES OVER TO PROPANE AFTER 45 SECONDS OR AFTER THE VEHICLE REACHES THE REQUIRED TEMPERATURE THE PRESSURE SENSOR IS DEFECTIVE - REPLACE