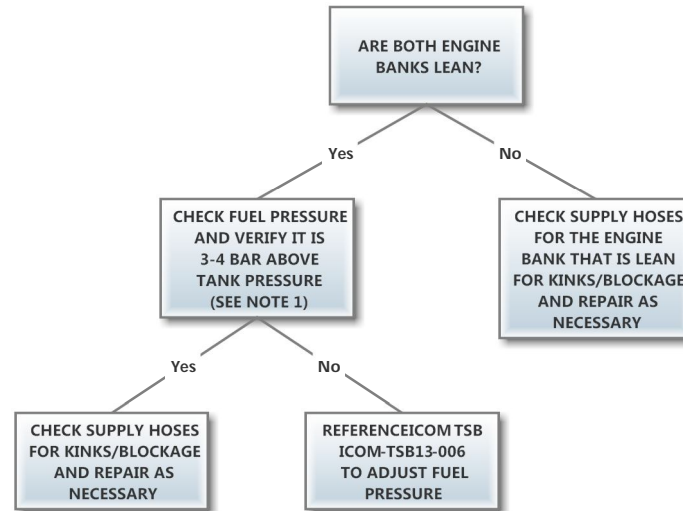


**SYMPTOM:
VEHICLE RUNS LEAN
ON LPG**



NOTE 1
- INSTALL PRESSURE GAUGE ONTO REGULATOR
- CYCLE THE IGNITION KEY TO 'ON' FOR A FEW SECONDS AND BACK TO 'OFF'
- IF THE PRESSURE READING ON THE GAUGE DROPS TO TANK PRESSURE INSTANTLY, THERE IS NO BLOCKAGE ON THE RETURN LINE
- IF THE PRESSURE READING ON THE GAUGE DOES NOT DROP TO TANK PRESSURE INSTANTLY, THERE IS A BLOCKAGE ON THE RETURN LINE